



Accessing the Sea & its Biodiversity for Science. What role for European Research Infrastructures?

EU position on the Deep Sea and the High Seas,

Iain Shepherd

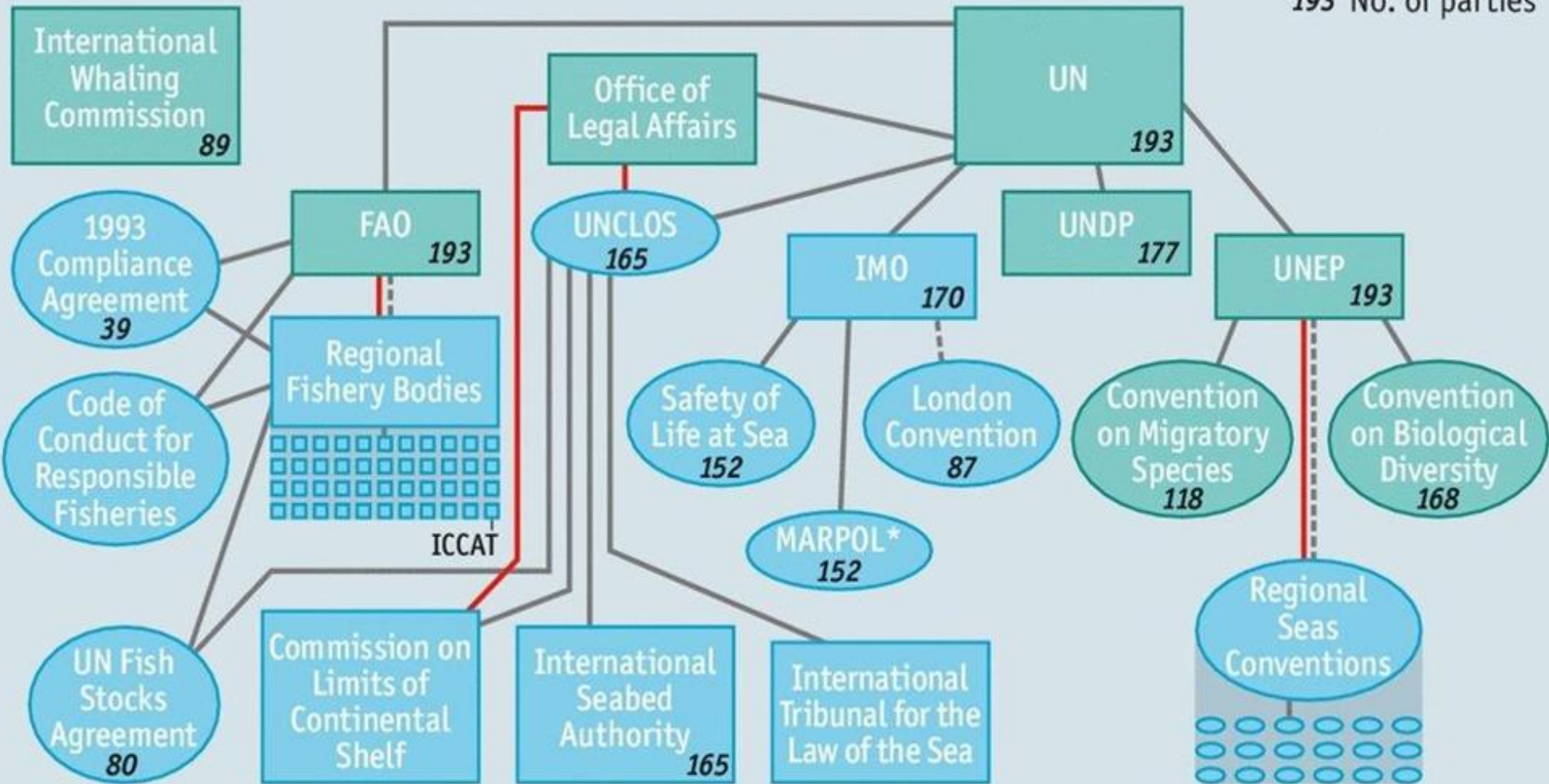
**Directorate-General for Maritime Affairs and Fisheries (DG MARE)
EUROPEAN COMMISSION**



International management of the high seas, simplified

- International institution
- Ocean-only institution
- International agreement
- Ocean-only agreement
- Regulatory connection
- Partial reg. connection
- Administrative connection

193 No. of parties





- UN Convention on the Law of the Sea (UNCLOS) and its implementing Fish Stocks agreement (UNFSA)
- Right to fish in high sea with limitations.
 - manage fisheries sustainably.
 - duty to cooperate. unilateral action cannot replace the **duty to cooperate** to conserve and use sustainably the living marine resources.
 - protect and preserve the marine environment and its biodiversity.

Regional Fisheries Management Organisations



European
Commission

The EU is currently a contracting party to six tuna RFMOs and 11 non-tuna RFMOs

Non-tuna RFMOs



- NEAFC: North-East Atlantic Fisheries Commission
- SEAFO: South-East Atlantic Fisheries Organisation
- GFCM: General Fisheries Commission for the Mediterranean
- NAFO: Northwest Atlantic Fisheries Organisation
- SPRFMO: South Pacific Regional Fisheries Management Organisation
- CCBSPP: Convention on the Conservation and Management of Pollock Resources in Central Bering Sea
- NASCO: North Atlantic Salmon Conservation Organisation
- SIOFA: South Indian Ocean Fisheries Agreement
- CCAMLR: Convention on Conservation of Antarctic Marine Living Resources

Tuna RFMOs

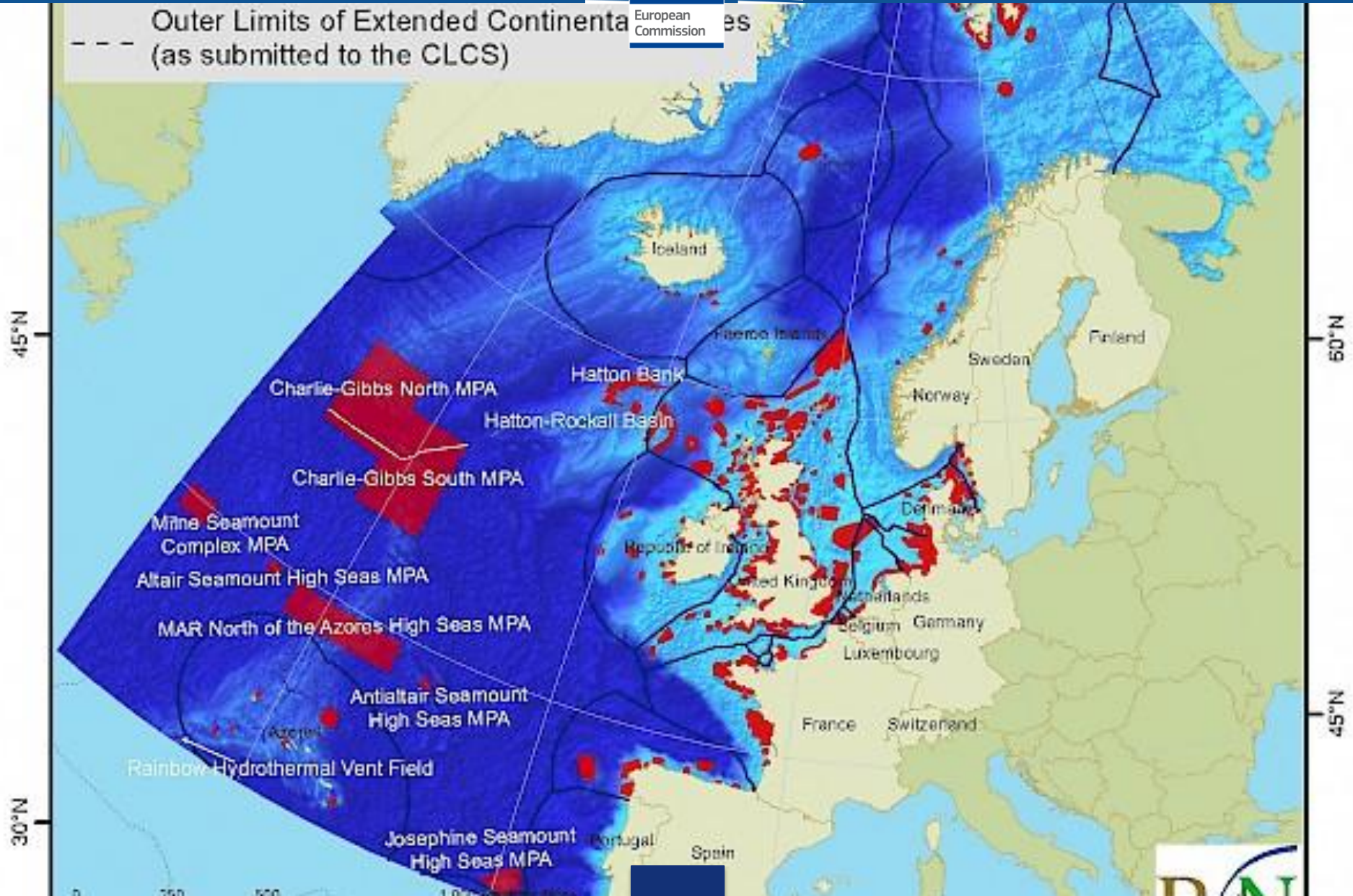


- ICCAT: International Commission for the Conservation of Atlantic Tunas
- IATTC: Inter American Tropical Tuna Commission
- WCPFC: Western and Central Pacific Fisheries Commission
- IOTC: Indian Ocean Tuna Commission
- CCSBT: Commission for the Conservation of Southern Bluefin Tuna

not only fish



collaboration with regional sea conventions



international seabed authority

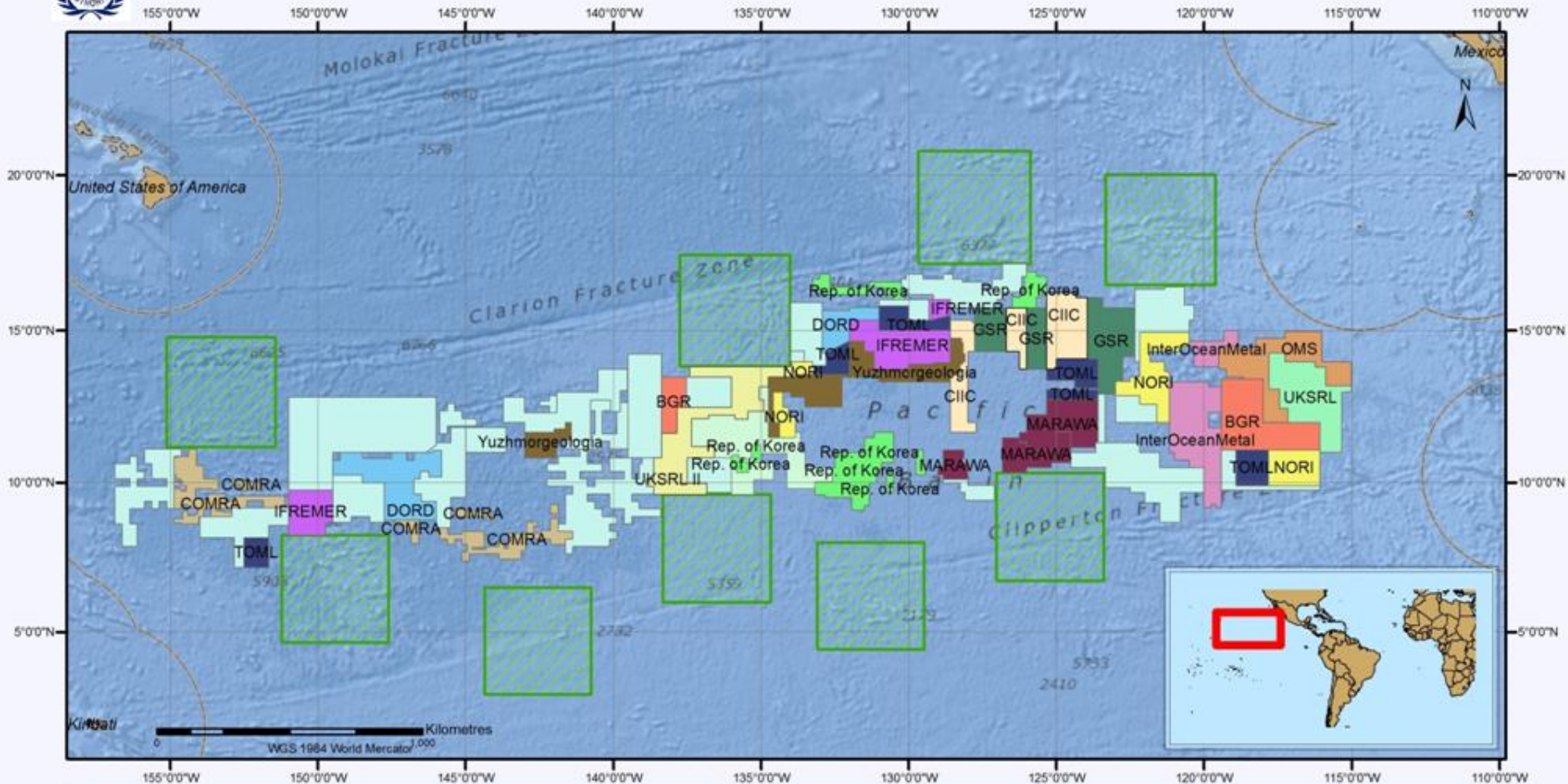


- responsible for exploration contracts
- can allocate mining contracts once mining code is adopted
- the draft of Exploitation Regulation submitted during 22nd Annual Session (July 2016).





Polymetallic Nodules Exploration Areas in the Clarion-Clipperton Fracture Zone



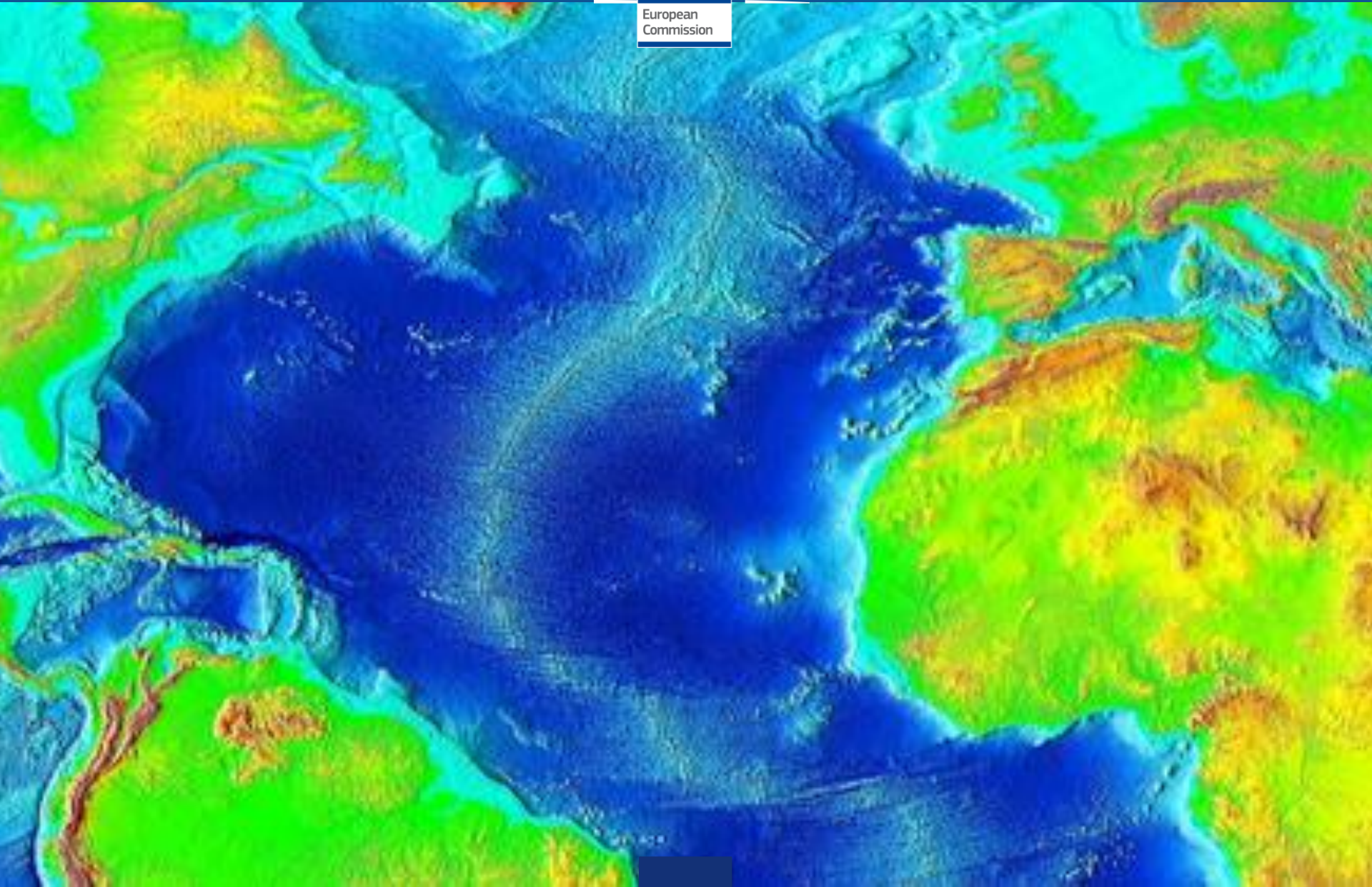
- | | |
|-----------------------------------------------------------------------------------|---------------------------------------------------------------------------------------|
| Ocean Mineral Singapore Pte Ltd. (OMS) | Government of the Republic of Korea |
| Cook Islands Investment Corporation (CIIC) | Institut français de recherche pour l'exploitation de la mer (IFREMER; France) |
| Marawa Research and Exploration Ltd (Kiribati) | Interoceanmetal (IOM; Bulgaria, Cuba, Czech Republic, Poland, Russian Fed., Slovakia) |
| Bundesanstalt für Geowissenschaften und Rohstoffe (BGR; Germany) | Nauru Ocean Resources Inc. (NORI; Nauru) |
| China Ocean Mineral Resources Research and Development Association (COMRA; China) | Tonga Offshore Mining Ltd (TOML, Tonga) |
| Deep Ocean Resources Development Company (DORD; Japan) | UK Seabed Resources Ltd (UKSRL I; UK) |
| G-TEC Minerals Resources NV (GSR; Belgium) | Yuzhmorgeologia (Russian Federation) |
| Reserved area* | UK Seabed Resources Ltd. (UKSRL II; UK) |
| Area of particular environmental interest (APEI)** | Exclusive Economic Zones |

* In the case of polymetallic nodules, the so-called parallel system provides that each application for exploration by a developed State must cover two parts of "equal estimated commercial value".

mid-Atlantic ridge and Rio Grande rise



European
Commission



Any questions?

